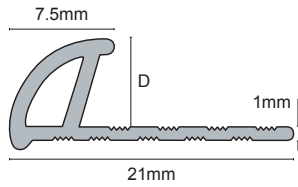


# ETR

Product Datasheet 10.18



## Trim Regular

01 White



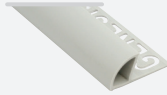
09 Caramel



10 Ivory



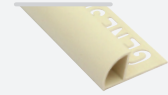
11 Grey



12 Peach



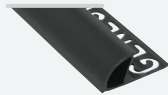
13 Champers



14 Buff



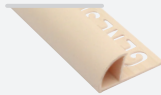
16 Black



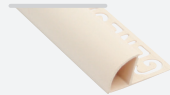
20 Brown



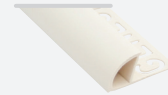
24 Melba



25 Beige



26 Cream



32 Soft Cream



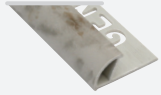
34 Soft Grey



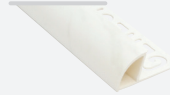
62 Brown Marble



63 Grey Marble



64 White Marble



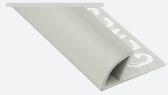
70 Toffee Swirl



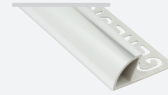
72 Roman Marble



81 Matt Silver



91 Bright Silver



111 Glacier White



116 Barley Marble



### Product Description

A round edge PVC edging trim - This profile features a small quadrant face which is good for 3 dimensional alignment, overhang lips to better butt against the cushion edge of the ceramic tile and a second upright support to close the face and make it suitable for floor tile use.

### Dimensions

All profiles are available in 2.5m lengths.  
In depths of 6, 7, 8, 10 and 12mm internal depths.

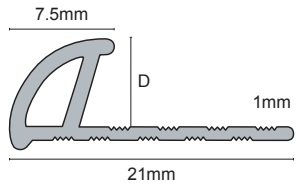
### Allied Products:

ETR has specially designed PVC three way corner pieces, PR, PD and PE, designed to provide a perfect rounded safe edge so no mitring is required. Available in 6, 8, 10 and 12mm depths to suit all profiles.



# ETR

Product Datasheet 10.18



## Technical Details

UPVC is particularly suitable for a wide range of application due to its excellent chemical resistance, however note the following:

Not recommended for use above 60°C resistant to most oils, alcohols, petrol and fats.

It is unsuitable for use in contact with aromatic and chlorinated hydrocarbons, ketones, nitro compounds, esters and cyclic ethers with cause some swelling.

Property	Test Method	Result
Vicat Softening Point	ISO 306	93°C
Tensile Modulus	ASTM D638	1.19 GPa
Yield Stress	ASTM D638	44.8 MPa
Yield Strain	ASTM D638	4.42%
Elongation at Failure	ASTM D638	131%
Flexural Modulus	ISO 178	2.38 GPa
Tensile Impact Strength	ISO 8256	413 kJ/m <sup>2</sup>

## Maintenance

Genesis ETR requires no special maintenance.

Clean periodically using a neutral detergent to maintain the appearance.

Regular cleaning aids the longevity of the profile and ensures there is no corrosion that could affect safety.

## Installation

1. Select ESA/EFA according to tile thickness.
2. Trowel tile adhesive over the area that forms the perimeter of the tiled covering.
3. Press the perforated anchoring leg of the ESA into the tile adhesive and align, mechanical fix if required.
4. Trowel additional adhesive over the perforated anchoring leg to ensure full coverage.
5. Solidly embed the tiles so that the tiled surface is flush with the top of the profile, the profile should not be higher than the tiled surface, but rather up to approximately 1 mm lower.
6. Fill the joint completely with grout.

+44 (0)1642 713000 [info@genesis-gs.com](mailto:info@genesis-gs.com)  
[www.genesis-gs.com](http://www.genesis-gs.com)

 **Genesis**  
For the Perfect Finish